

# MONTHLY MEMBERSHIP PROGRESS REPORT

LOCATION KENTUCKY

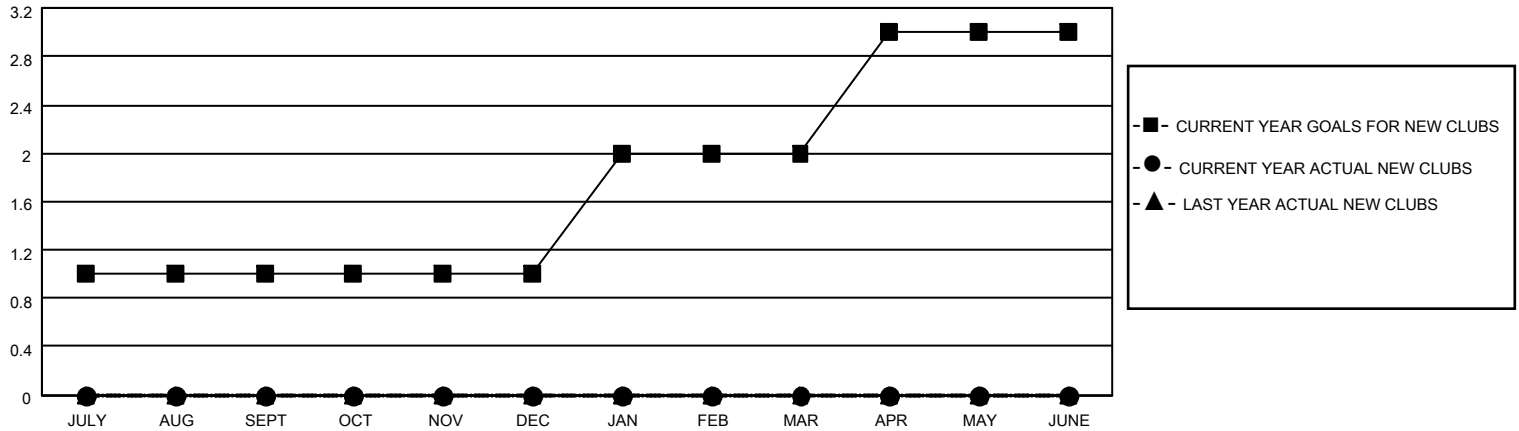
District 43 K

Results as of: 9/30/2020

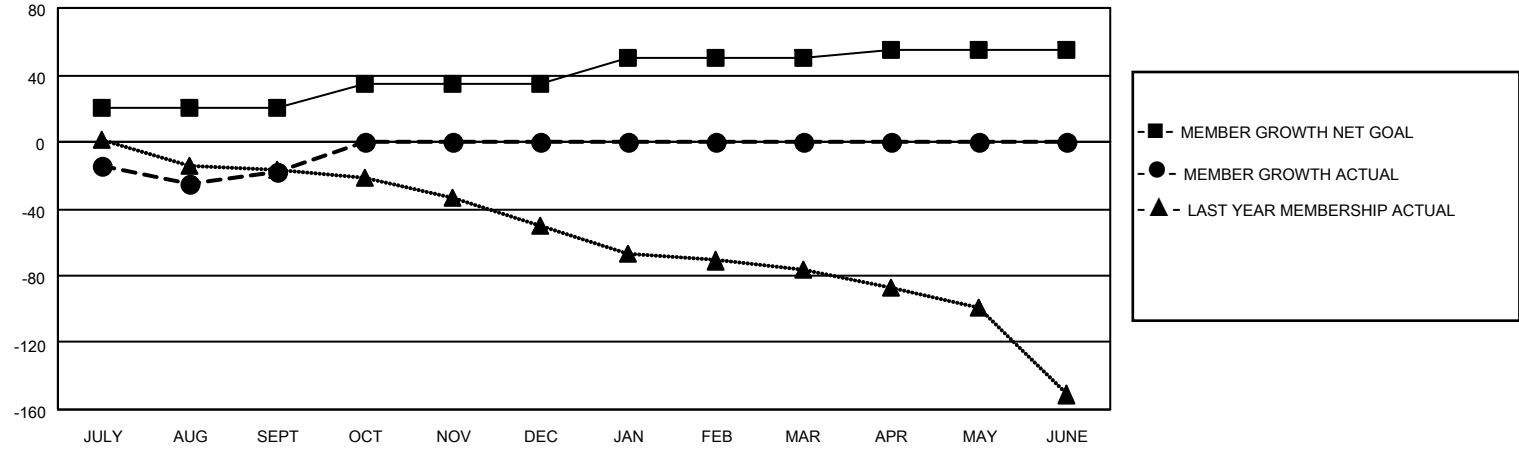
Clubs			
RESULTS FOR 2020-2021			
QUARTER	NEW CLUB GOAL	NEW CLUBS	DROPPED CLUBS
JULY/AUG/SEPT	1	0	0
OCT/NOV/DEC	0	0	0
JAN/FEB/MAR	1	0	0
APR/MAY/JUNE	1	0	0

Members			
RESULTS FOR 2020-2021			
QUARTER	MEMBER GROWTH NET GOAL	MEMBER GROWTH ACTUAL	DROPPED MEMBERS ACTUAL (including transfers)
JULY/AUG/SEPT	20	20	34
OCT/NOV/DEC	15	0	0
JAN/FEB/MAR	15	0	0
APR/MAY/JUNE	5	0	0

**GOALS AND ACTUAL NEW CLUBS CUMULATIVE**



**GOALS AND ACTUAL MEMBERS CUMULATIVE**



DROPPED CLUBS: 0	12 CLUBS OF 70 ADDED 1 OR MORE NEW MEMBERS	<u>GENDER DISTRIBUTION</u>
<u>DROPPED MEMBERS</u>		MALE            1,328 (68.45%)
DECEASED            7		FEMALE        612 (31.55%)
CLUB CANCELLED    0		TOTAL FAMILY UNIT MEMBERS            389
OTHER                27		FAMILY MEMBERS PAYING HALF DUES            199
<b>TOTAL                34</b>	<a href="#">CLICK HERE FOR CUMULATIVE MEMBERSHIP DATA</a>	